

LED Lamps T8 (G13)

All in one
Compatible

LED lamps designed to retrofit
linear fluorescent lamps



AC In
100~240V



Electric Ballast
ECG



Magnetic Ballast
CCG

Easy of use
Direct Replacement



AMRI AME Tube Series Features

Compatible with

◆ AC In

100V~260V

◆ Electric Ballast (ECG)

PF>0.95

Free frequency.

Rapid & Preheat & Instant start e-ballast

Support 1 operation 1/2/3/4 lamp

◆ Magnetic Ballast (CCG)

◆ Energy Efficiency Index(EEI)

A+

Easy of use

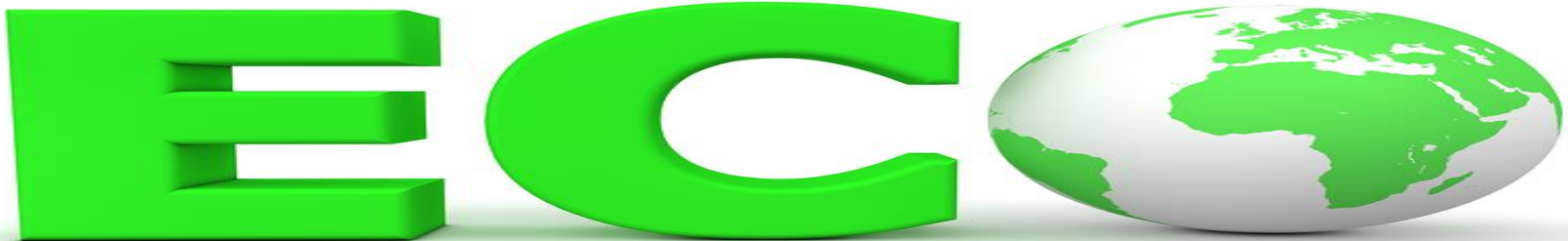
No need to re-wire the fixture, direct plug-and-play.



dreamstime.com

AMRI AME Tube Series Features




| | AC In | Electric Ballast (ECG) | Magnetic Ballast (CCG) |
|---------------|----------|---------------------------|---------------------------|
| Rated Voltage | 100~260V | According To Ballast Spec | According To Ballast Spec |
| PF | <0.95 | <0.95 | <0.5 |
| Warranty | 20000HR | 50000HR | 20000HR |



LED Tube Replace fluorescent lamp List




T8 AME FL Series

| Length | 1.5m | 1.2m | 0.6m |
|-------------------------------------|--|--|---|
| T8 FL lamp | 58W | 40/38/36W | 20/18W |
| AMRI LED T8 Series |  22W |  18W |  9W |
| Energy-Saving | 64% | 50% | 50% |
| Energy consumption kWh/1000h | 22 | 18 | 9 |
| CO₂ Abatement(KW) | 23.4 kg-CO ₂ | 11.7 kg-CO ₂ | 5.85 kg-CO ₂ |

LED Tube Replace fluorescent lamp List

T8 HF AME Series

| Length | 1.5m | 1.2m | 0.6m |
|-------------------------------------|-----------|---|--|
| T8 HF FL lamp | NA | 32W | 17/16W |
| AMRI LED T8 Series | NA |  18W |  9W |
| Energy-Saving | NA | 44% | 44% |
| Energy consumption kWh/1000h | NA | 18 | 9 |
| CO₂ Abatement(KW) | NA | 9.1 kg-CO₂ | 4.55 kg-CO₂ |

Product Name: LED T8 2F AME Tube

Product Model: AM8AME2FXXK



Note: Suitable AC In/EB/EM

Replace T8(G13) fluorescent lamp 20/18W

| Item | AM8AME2FXXK |
|-----------------------|-------------------------------------|
| Rated Voltage | In accordance with electric ballast |
| Rated Current | 260~360mA |
| Rated Power | 9W±1W |
| Fire Protection Class | UL94V-2 |

- 一、 Packing List: Led T8 2F
- 二、 Replace T8(G13) fluorescent lamp 20/18W
- 三、 **No modifications of the luminaire which the LED lamp is to be used with are to be made.**
- 四、 The ambient temperature range -20 °C ~+60 °C
- 五、 “This lamp is designed for general lighting service (excluding for example explosive atmospheres).”

AMRI AME Tube T8 0.6M Speciation

Optical Parameters

| Model No. | Order No. | Color Temperature | Luminance | Lm/W | CRI | Angles | LED Type | Power |
|---|----------------|-------------------|-----------|------|-----|--------|----------|-------|
| LED T8 2F AME Tube | AM8AME2F30K-PL | 3000k | 720 | 80 | 80 | 300° | SMD | 9W |
| | AM8AME2F35K-PL | 3500k | 720 | 80 | 80 | 300° | SMD | 9W |
| | AM8AME2F40K-PL | 4000k | 765 | 85 | 80 | 300° | SMD | 9W |
| | AM8AME2F50K-PL | 5000k | 810 | 90 | 80 | 300° | SMD | 9W |
| | AM8AME2F57K-PL | 5700k | 855 | 95 | 80 | 300° | SMD | 9W |
| | AM8AME2F65K-PL | 6500k | 900 | 100 | 80 | 300° | SMD | 9W |

AMRI ENTERPRISE CO., LTD.
 TAIWAN LEADERS CENTER, 8FA2
 NO, 29 HAI-PIEN ROAD, KAOHSIUNG, TAIWAN, R.O.C
<http://www.amriled.com>
 TEL: 886-7-3353075
 FAX: 886-7-3389030



AMRI AMB Tube T8/2Foot Speciation

Electrical Parameters

| Model No. | Order No. | Electrical Parameters | | | Luminance | | |
|---------------------------------------|----------------|-----------------------|-----------|-----------|-----------|-----------|-----------|
| | | AC | EB ECG | EM CCG | AC | EB ECG | EM CCG |
| LED T8 2F AME Tube | AM8AME2F30K-PL | 9 | 9 | 12 | 720 | 720 | 960 |
| | AM8AME2F35K-PL | 9 | 9 | 12 | 720 | 720 | 960 |
| | AM8AME2F40K-PL | 9 | 9 | 12 | 765 | 765 | 1020 |
| | AM8AME2F50K-PL | 9 | 9 | 12 | 810 | 810 | 1080 |
| | AM8AME2F57K-PL | 9 | 9 | 12 | 855 | 855 | 1140 |
| | AM8AME2F65K-PL | 9 | 9 | 12 | 900 | 900 | 1200 |

AMRI ENTERPRISE CO., LTD.
 TAIWAN LEADERS CENTER,8FA2
 NO,29 HAI-PIEN ROAD,KAHHSIUNG,TAIWAN,R.O.C
<http://www.amriled.com>
 TEL: 886-7-3353075
 FAX: 886-7-3389030



Product Name: LED T8 4F AME Tube

Product Model: AM8AME4FXXK



Note: Suitable AC In/EB/EM

Replace T8(G13) fluorescent lamp 36/38 W

| Item | AM8EB4FXXK-AL |
|-----------------------|-------------------------------------|
| Rated Voltage | In accordance with electric ballast |
| Rated Current | 260~360mA |
| Rated Power | 18W±1W |
| Fire Protection Class | UL94V-2 |

- 一、 Packing List: Led T8 4F
- 二、 Replace T8(G13) fluorescent lamp 36/38 W
- 三、 **No modifications of the luminaire which the LED lamp is to be used with are to be made.**
- 四、 The ambient temperature range $-20^{\circ}\text{C} \sim +60^{\circ}\text{C}$
- 五、 “This lamp is designed for general lighting service (excluding for example explosive atmospheres).”

AMRI AMB Tube T8 1.2M Speciation

Optical Parameters

| Model No. | Order No. | Color Temperature | Luminance | Lm/W | CRI | Angles | LED Type | Power |
|---|----------------|-------------------|-----------|------|-----|--------|----------|-------|
| LED T8 4F AME Tube | AM8AME4F30K-PL | 3000k | 1500 | 80 | 80 | 300° | SMD | 18W |
| | AM8AME4F35K-PL | 3500k | 1500 | 80 | 80 | 300° | SMD | 18W |
| | AM8AME4F40K-PL | 4000k | 1550 | 85 | 80 | 300° | SMD | 18W |
| | AM8AME4F50K-PL | 5000k | 1620 | 90 | 80 | 300° | SMD | 18W |
| | AM8AME4F57K-PL | 5700k | 1750 | 95 | 80 | 300° | SMD | 18W |
| | AM8AME4F65K-PL | 6500k | 1800 | 100 | 80 | 300° | SMD | 18W |

AMRI ENTERPRISE CO., LTD.
 TAIWAN LEADERS CENTER, 8FA2
 NO, 29 HAI-PIEN ROAD, KAOHSIUNG, TAIWAN, R.O.C
<http://www.amriled.com>
 TEL: 886-7-3353075
 FAX: 886-7-3389030



AMRI AMB Tube T8 1.2M Speciation

Electrical Parameters

| Model No. | Order No. | Electrical Parameters | | | Luminance | | |
|---|----------------|-----------------------|-----------|-----------|-----------|-----------|-----------|
| | | AC | EB ECG | EM CCG | AC | EB ECG | EM CCG |
| <u>LED T8</u> <u>4F</u> <u>AME</u> <u>Tube</u> | AM8AME4F30K-PL | 18 | 18 | 20 | 1500 | 1500 | 1650 |
| | AM8AME4F35K-PL | 18 | 18 | 20 | 1500 | 1500 | 1650 |
| | AM8AME4F40K-PL | 18 | 18 | 20 | 1550 | 1550 | 1690 |
| | AM8AME4F50K-PL | 18 | 18 | 20 | 1620 | 1620 | 1760 |
| | AM8AME4F57K-PL | 18 | 18 | 20 | 1750 | 1750 | 1880 |
| | AM8AME4F65K-PL | 18 | 18 | 20 | 1800 | 1800 | 1930 |

AMRI ENTERPRISE CO., LTD.
 TAIWAN LEADERS CENTER,8FA2
 NO,29 HAI-PIEN ROAD, KAOHSIUNG, TAIWAN, R.O.C
<http://www.amriled.com>
 TEL: 886-7-3353075
 FAX: 886-7-3389030



Product Name: LED T8 5F AME Tube

Product Model: AM8AME5FXXK



Note: Suitable AC In/EB/EM

Replace T8(G13) fluorescent lamp 58 W

| Item | AM8AME5FXXK-GL |
|-----------------------|-------------------------------------|
| Rated Voltage | In accordance with electric ballast |
| Rated Current | 450~500mA |
| Rated Power | 24W±1W |
| Fire Protection Class | UL94V-2 |

- 一、 Packing List: Led T8 5F
- 二、 Replace T8(G13) fluorescent lamp 58W
- 三、 **No modifications of the luminaire which the LED lamp is to be used with are to be made.**
- 四、 The ambient temperature range -20 °C ~+60 °C
- 五、 “This lamp is designed for general lighting service (excluding for example explosive atmospheres).”

AMRI AME Tube T8 1.5M Speciation

Optical Parameters

| Model No. | Order No. | Color Temperature | Luminance | Lm/W | CRI | Angles | LED Type | Power |
|---|----------------|-------------------|-----------|------|-----|--------|----------|-------|
| LED T8 5F AME Tube | AM8AME4F30K-PL | 3000k | 1680 | 80 | 80 | 300° | SMD | 22W |
| | AM8AME4F35K-PL | 3500k | 1680 | 80 | 80 | 300° | SMD | 22W |
| | AM8AME4F40K-PL | 4000k | 1785 | 85 | 80 | 300° | SMD | 22W |
| | AM8AME4F50K-PL | 5000k | 1890 | 90 | 80 | 300° | SMD | 22W |
| | AM8AME4F57K-PL | 5700k | 2000 | 95 | 80 | 300° | SMD | 22W |
| | AM8AME4F65K-PL | 6500k | 2100 | 100 | 80 | 300° | SMD | 22W |

AMRI ENTERPRISE CO., LTD.
 TAIWAN LEADERS CENTER, 8FA2
 NO, 29 HAI-PIEN ROAD, KAOHSIUNG, TAIWAN, R.O.C
<http://www.amriled.com>
 TEL: 886-7-3353075
 FAX: 886-7-3389030



AMRI EB Tube T8 1.5M Speciation

Electrical Parameters

| Model No. | Order No. | Electrical Parameters | | | Luminance | | |
|---|----------------|-----------------------|-----------|-----------|-----------|-----------|-----------|
| | | AC | EB ECG | EM CCG | AC | EB ECG | EM CCG |
| <u>LED T8</u> <u>5F</u> <u>AME</u> <u>Tube</u> | AM8AME4F30K-PL | 22 | 22 | 25 | 1760 | 1760 | 2000 |
| | AM8AME4F35K-PL | 22 | 22 | 25 | 1760 | 1760 | 2000 |
| | AM8AME4F40K-PL | 22 | 22 | 25 | 1870 | 1870 | 2125 |
| | AM8AME4F50K-PL | 22 | 22 | 25 | 1980 | 1980 | 1980 |
| | AM8AME4F57K-PL | 22 | 22 | 25 | 2090 | 2090 | 2090 |
| | AM8AME4F65K-PL | 22 | 22 | 25 | 2200 | 2200 | 2200 |

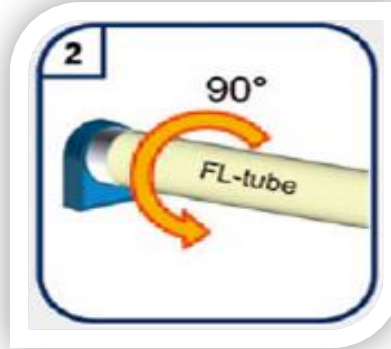
AMRI ENTERPRISE CO., LTD.
 TAIWAN LEADERS CENTER,8FA2
 NO,29 HAI-PIEN ROAD, KAOHSIUNG, TAIWAN, R.O.C
<http://www.amriled.com>
 TEL: 886-7-3353075
 FAX: 886-7-3389030



AMRI AME T8 TUBE

Graphical instruction(EB/CCG)

Schematic steps of removing a fluorescent lamp and inserting LED lamp



Switch off electricity.

Secure the position by turning the lamp by 90° .

Remove the conventional lamp.



Insert the LED lamp into the lamp holder.

Secure the position by turning the lamp by 90° .

Switch on electricity and check for lamp starting.

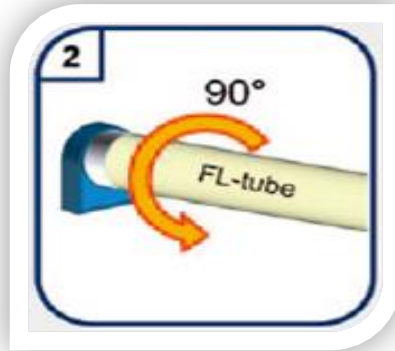
AMRI AME T8 TUBE

Graphical instruction(EM/CCG)

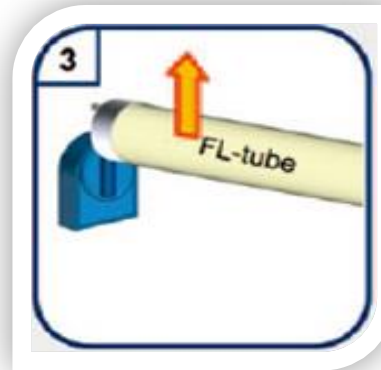
Schematic steps of removing a fluorescent lamp and inserting LED lamp



Switch off electricity.



Secure the position by turning the lamp by 90° .



Remove the conventional lamp.



Remove the starter.



Insert the LED lamp into the lamp holder.



Secure the position by turning the lamp by 90° .



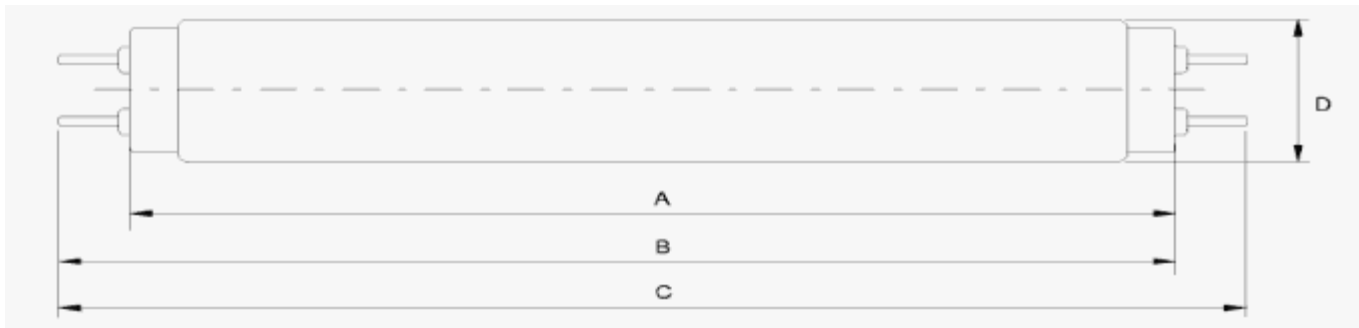
Switch on electricity and check for lamp starting.



Package

| Product Name | (PCS/CTN) | (G.W.) | (mm) |
|--------------|-----------|---------|---------------------|
| T8 2ft | 30 PCS | 6.5 KG | L640 * W260 * H230 |
| T8 4ft | 30 PCS | 11.5 KG | L1240 * W260 * H230 |
| T8 5ft | 30 PCS | 9 KG | L1545 * W210 * H185 |
| T5 2 ft | 50 PCS | 5.5 KG | L580 * W220 * H210 |
| T5 3ft | 50 PCS | 8.5 KG | L885 * W215 * H215 |
| T5 4ft | 50 PCS | 10.5 KG | L1180 * W220 * H130 |
| T5 5ft | 50 PCS | 14 KG | L1485 * W215 * H215 |

Mechanical Parameters



| | A | B | | C | D |
|------------------|--------|--------|--------|--------|------|
| | Max. | Min. | Max. | Max. | Max. |
| G13----T8 | | | | | |
| T8-600 | 589.8 | 594.5 | 596.9 | 604.0 | 28.0 |
| T8-900 | 894.6 | 899.3 | 901.7 | 908.8 | 28.0 |
| T8-1200 | 1199.4 | 1204.1 | 1206.5 | 1213.6 | 28.0 |
| T8-1500 | 1500.0 | 1504.7 | 1507.1 | 1514.2 | 28.0 |

LED T8/T5 TUBE EB SERIES

Application

Supermarket



Hospital



Office



School



Factory



Public transit

